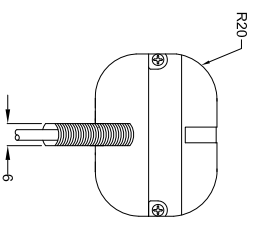
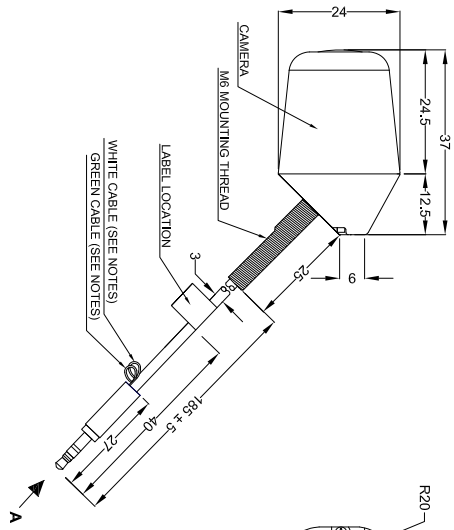
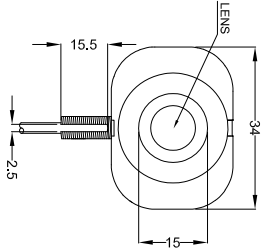
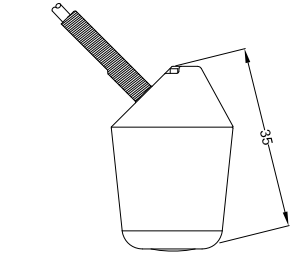
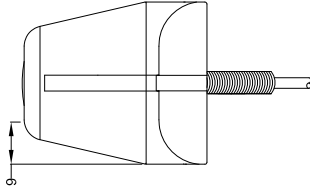
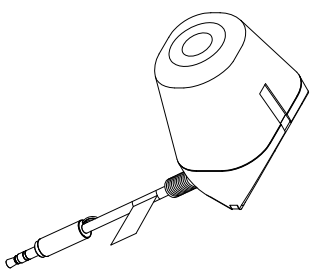
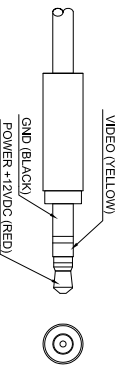


MODEL NO.	STOCK CODE	VARIANTS
BE-500VC C	(#3159A)	VERTICAL MOUNT CAMERA ONLY
BE-500HC C	(#3160A)	HORIZONTAL MOUNT CAMERA ONLY

Rev/No	Revision note	Date	Signature	Checked
1	CONNECTOR CHANGED FROM MOLEX TO JACK PLUG	28/09/09	SM	DK



**VIEW A**



**NOTES:**  
 DIMENSIONS IN MM  
 FINISH IS BLACK  
 BASE MATERIAL IS CAST ZINC  
 CUT GREEN OR WHITE CABLE FOR NORMAL IMAGE  
 REFER TO "PRODUCT SPECIFICATION" FOR MORE DETAILS

PROPRIETARY NOTICE  
 THIS DESIGN AND TECHNICAL INFORMATION APPEARING ON THIS DRAWING IS THE PROPERTY OF BRIGADE ELECTRONICS PLC AND IS DISCLOSED IN CONFIDENCE. IT IS NOT TO BE COPIED, REPRODUCED, REVEALED TO OR APPROPRIATE BY OTHERS, EITHER IN WHOLE OR IN PART WITHOUT THE EXPRESS WRITTEN CONSENT OF BRIGADE ELECTRONICS PLC.

Item#	Quantity	Title/Name, designation, material, dimension etc	Article No./Reference
MAJUTER			
Designed by	Checked by	Approved by - date	File name
D/KERA	D/KERA	S.MATTERS	
BRIGADE ELECTRONICS			BE-500VC C (#3159A)
BE-000837-01-09			Edition A
			Sheet 1/1

